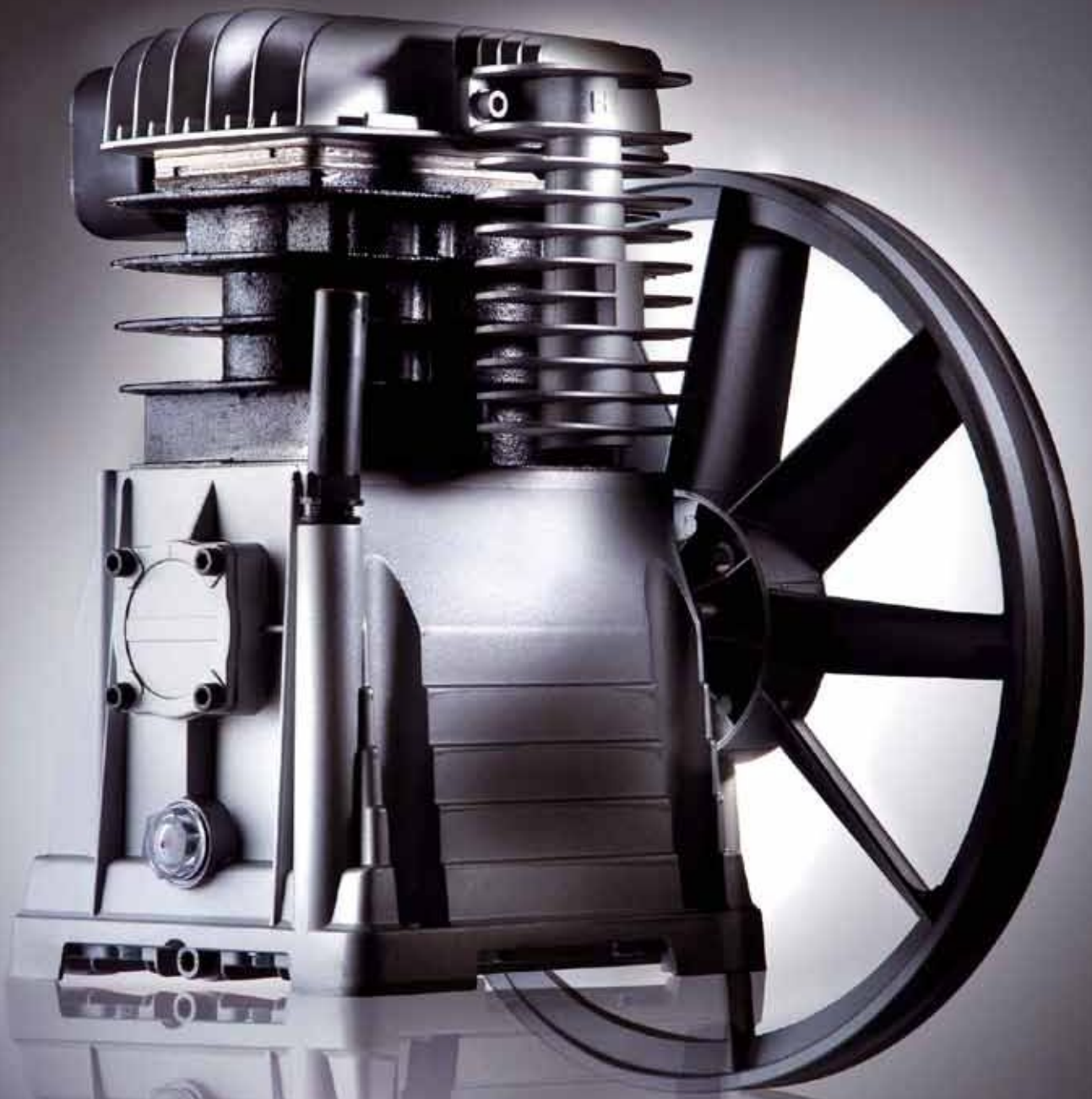


Wartungskits Kolbenkompressoren



AEROTECH

Hintergrund

Ersatzteile einzeln zu wechseln macht bei hochwertigen Verdichtern Sinn. Allerdings werden verschiedene Bauteile und Komponenten demontiert um an das eigentlich defekte Bauteil zu gelangen.

Die Zusammenstellung der einzelnen Gruppenbauteile ermöglicht den Ersatz auch von den Bauteilen die aufgrund des eigentlichen Defekts eventuell ebenfalls verschlissen sind.

Alle Kits werden verschweißt geliefert um Oxidation bei der Lagerung zu vermeiden und die Dichtungselemente zu schützen.

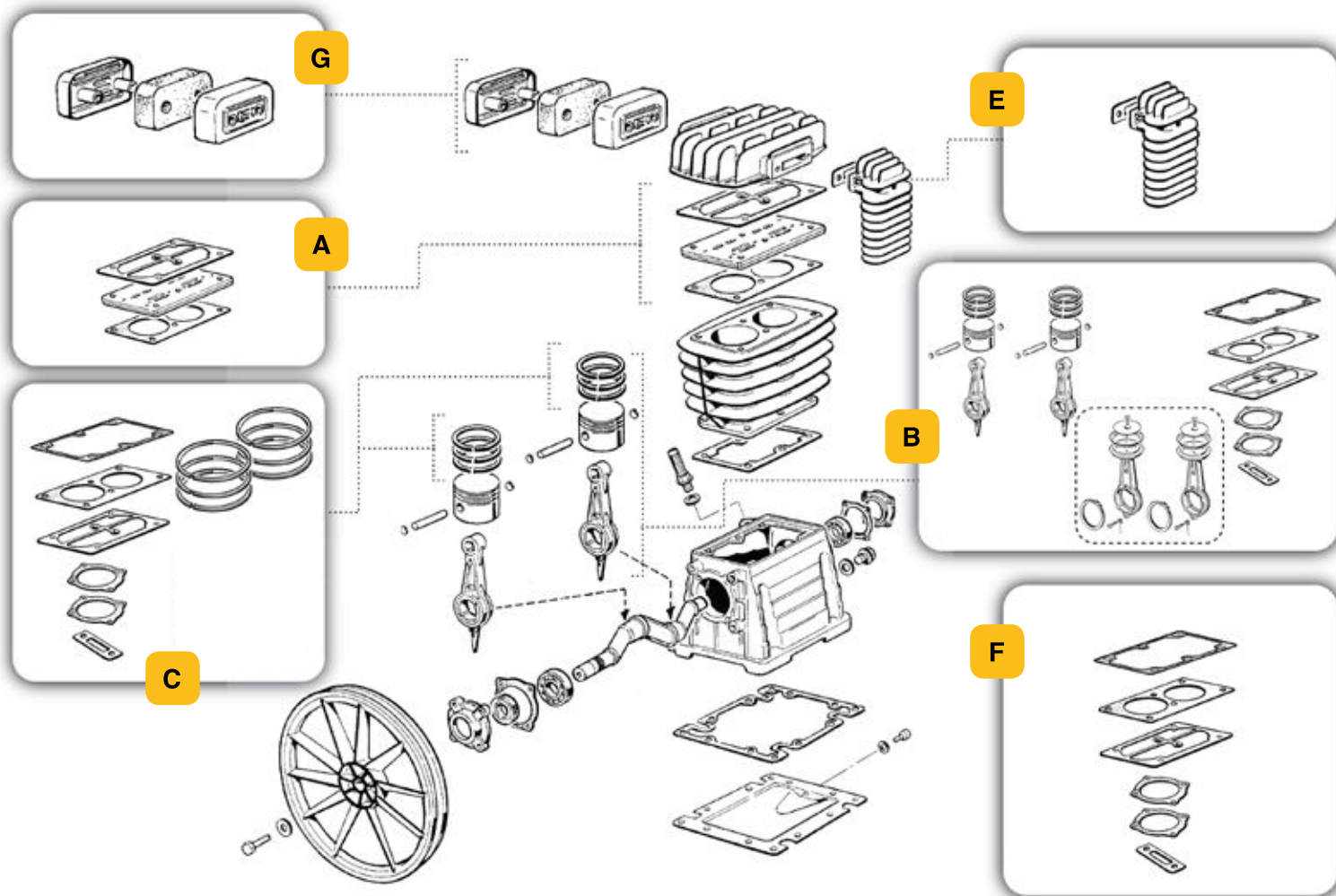


MPK Komponenten:


- Ventilplattensätze
- Kolbensätze
- Kolbenringsätze
- Vor- und Nachkühler
- Dichtungssätze
- Luftfilter



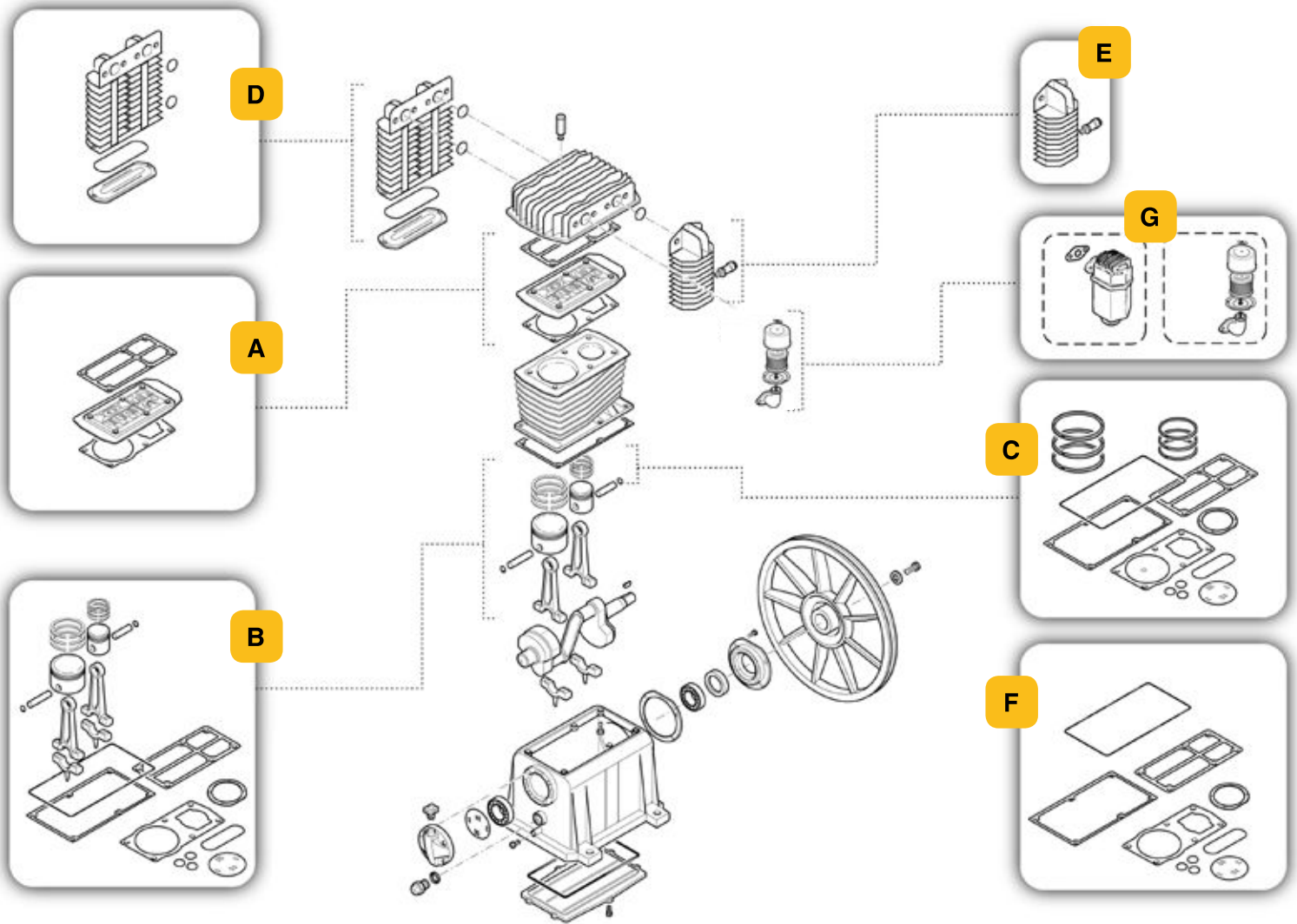
AEROTECH




GRUPPI POMPANTI MONOSTADIO SINGLE-STAGE PUMP UNITS

	KIT A	KIT B	KIT C	KIT E		KIT F	G	OIL
	Piastra portavalvole completa <i>Complete valve plate</i>	Pistone-biella <i>Piston-conrod</i>	Segmenti <i>Piston rings</i>	Collettore finale <i>Aftercooler</i>		Kit guarnizioni completo <i>Complete gasket kit</i>	Filtri aria <i>Air filters</i>	Q.tà max. olio (l) <i>Max. oil q.ty (l)</i>
							rettangolare rectangular	
B2800I - B2800BI	9434A06	9434B08	9434C08	-	9434E06	9434F07	9428110	0,5
B2800 - B2800B	9434A06	9434B09	9434C09	-	9434E06	9434F07	9428110	0,5
B3800 - B3800B	9434A06	9434B10	9434C09	-	9434E06	9434F07	9428110	0,6

AEROTEC



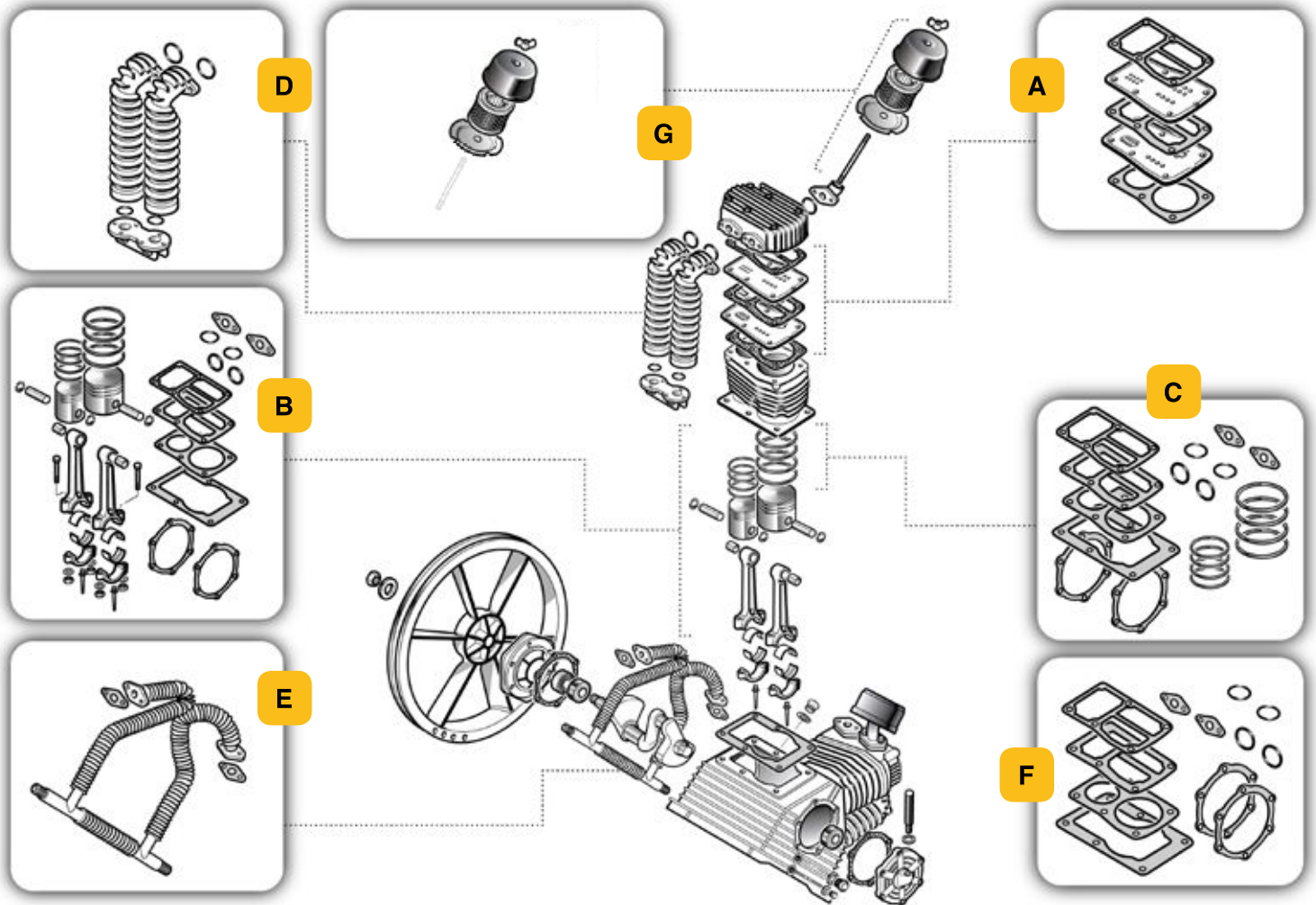
GRUPPI POMPANTI BISTADIO DOUBLE-STAGE PUMP UNITS

	KIT A	KIT B	KIT C	KIT D	KIT E	KIT F	G		OIL
	Piastra portavalvole completa <i>Complete valve plate</i>	Pistone-biella <i>Piston-conrod</i>	Segmenti <i>Piston rings</i>	Collettore intermedio <i>Intercooler</i>	Collettore finale <i>Aftercooler</i>	Kit guarnizioni completo <i>Complete gasket kit</i>	Filtri aria <i>Air filters</i>		Q.tà max. olio (l) <i>Max. oil q.ty (l)</i>
							rotondo <i>round</i>	esagonale <i>hexagonal</i>	
NB4	9434A03	9434B04	9434C04	9434D00	9434E04	9434F03	9420936	9421145	0,7
NB5	9434A04	9434B05	9434C05	9434D00	9434E04	9434F04	9420936	9421145	0,9
NB7	9434A04	9434B06	9434C06	9434D00	9434E04	9434F05	9420936	9421145	1,34
NB10	9434A05	9434B07	9434C07	9434D01	9434E05	9434F06	9420937	9421144	1,52

Zusatzinfo:

Umschlüsselung FINI Kolbenaggregate: NB4=BK113 / NB5= BK114 / NB7=BK119 / NB10=BK120

AEROTEC

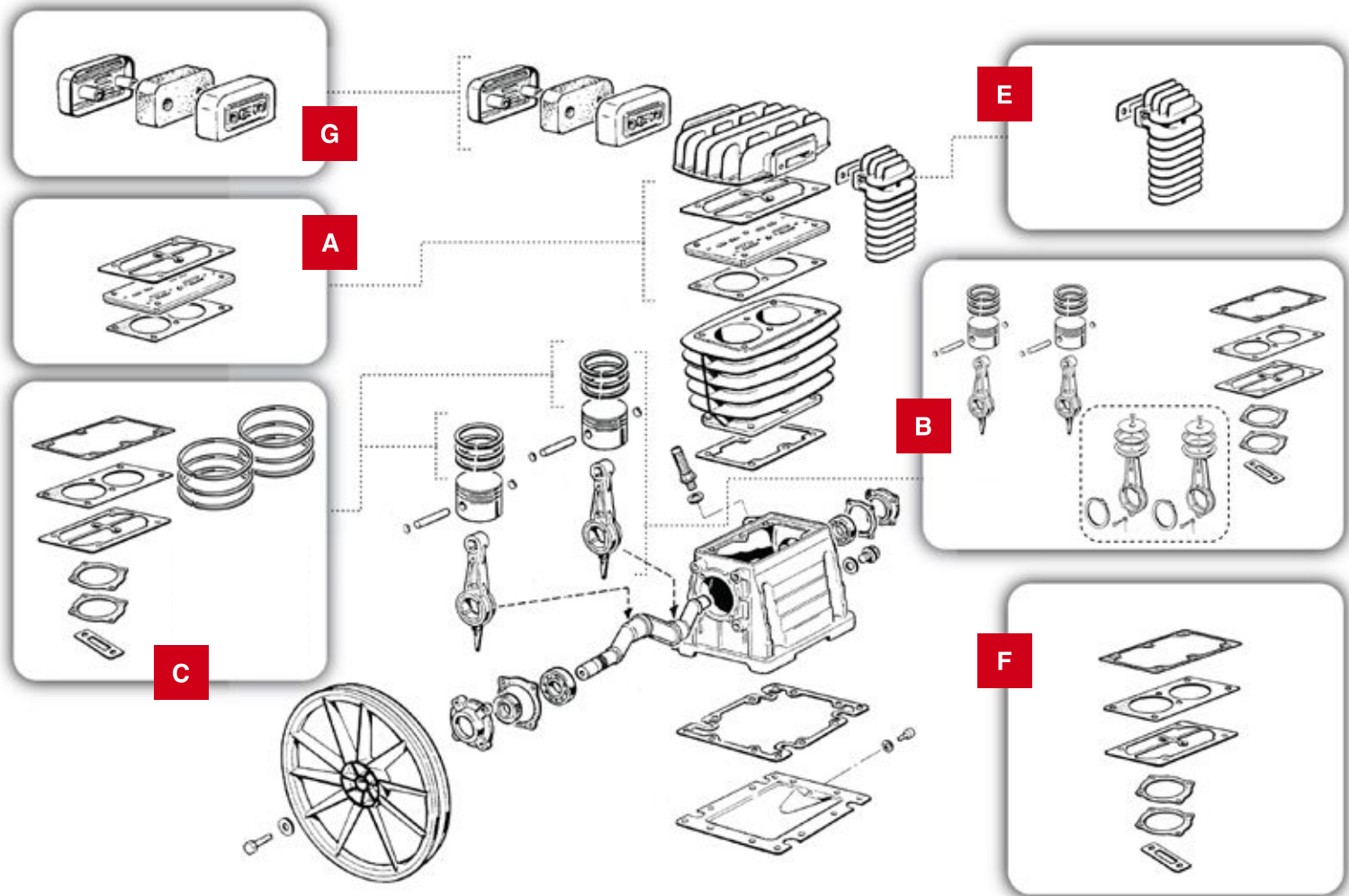


GRUPPI POMPANTI BISTADIO CON CILINDRI A "V" DOUBLE-STAGE PUMP UNITS WITH "V" CYLINDERS

	KIT A		KIT B		KIT C	KIT D	KIT E	KIT F	G	OIL
	Piastra portavalvole completa*		Pistone-biella*							
	SX L	DX R	SX L	DX R	Piston rings	Intercooler	Aftercooler	Complete gasket kit	Air filters	Max. oil q.ty (l)
NK60	9434A16	9434A23	9434B20	9434B27	9434C19	9434D03	9434E12	9434F17	SP81000	3,1
NK100	9434A17	9434A24	9434B21	9434B21	9434C20	9434D04	9434E18	9434F18	SP81000	6,67



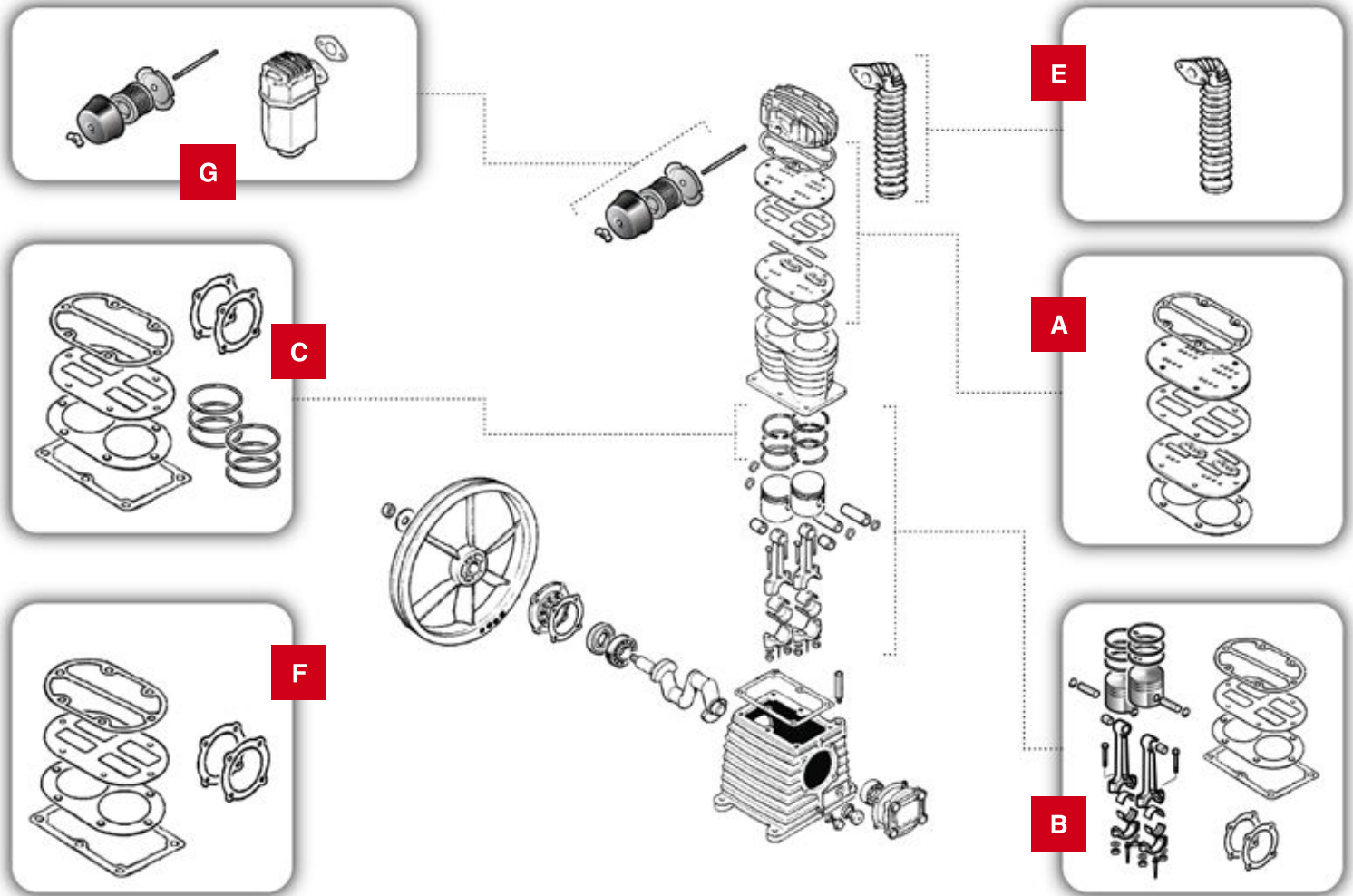
AEROTECH



GRUPPI POMPANTI MONOSTADIO SINGLE-STAGE PUMP UNITS

	KIT A	KIT B	KIT C	KIT E		KIT F	G	OIL
	Piastra portavalvole completa <i>Complete valve plate</i>	Pistone-biella <i>Piston-conrod</i>	Segmenti <i>Piston rings</i>	Collettore finale <i>Aftercooler</i>		Kit guarnizioni completo <i>Complete gasket kit</i>	Filtri aria <i>Air filters</i>	Q.tà max. olio (l) <i>Max. oil q.ty (l)</i>
							rettangolare <i>rectangular</i>	
SB28 - SB28C	9434A06	9434B09	9434C09	–	9434E06	9434F07	9428110	0,5
SB38C	9434A06	9434B10	9434C09	9434E06		9434F07	9428110	0,6

AEROTECH



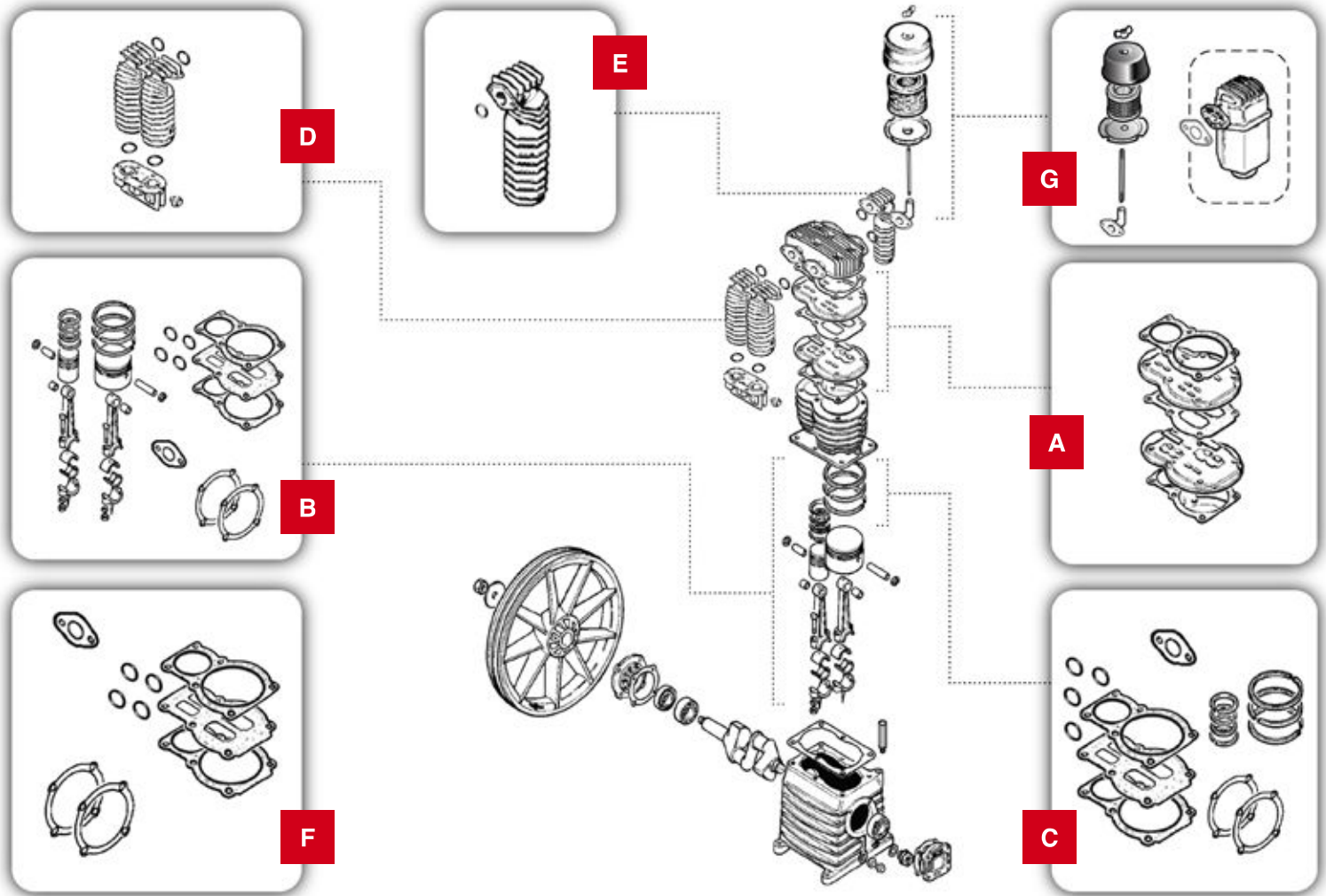
GRUPPI POMPANTI MONOSTADIO SINGLE-STAGE PUMP UNITS

	KIT A	KIT B	KIT C	KIT E	KIT F	G		OIL
	Piastra portavalvole completa <i>Complete valve plate</i>	Pistone-biella <i>Piston-conrod</i>	Segmenti <i>Piston rings</i>	Collettore finale <i>Aftercooler</i>	Kit guarnizioni completo <i>Complete gasket kit</i>	Filtri aria <i>Air filters</i>		Q.tà max. olio (l) <i>Max. oil q.ty (l)</i>
						rotondo <i>round</i>	esagonale <i>hexagonal</i>	
K3	9434A07	9434B11	9434C10	—	9434F08	SC81000	—	0,4
K8	9434A08	9434B12	9434C11	—	9434F09	SC81000	—	0,4
K11 - K11C	9434A09	9434B13	9434C12	9434E09	9434F10	SC81000	—	0,5
K17 - K17C	9434A10	9434B14	9434C13	9434E08	9434F11	SC81000	9421148	1
K18C	9434A11	9434B15	9434C14	9434E08	9434F12	—	9421148	1

Neues KIT verfügbar bestehend aus: Zylinderkopfdichtung, Ventilplattendichtung, Dichtung Zylinder/Ventilplatte und Ventilplattenplättchen

für K8 = 9434H01 für K11 = 9434H02 für K17 = 9434H03 für K18 = 9434H04

AEROTECH

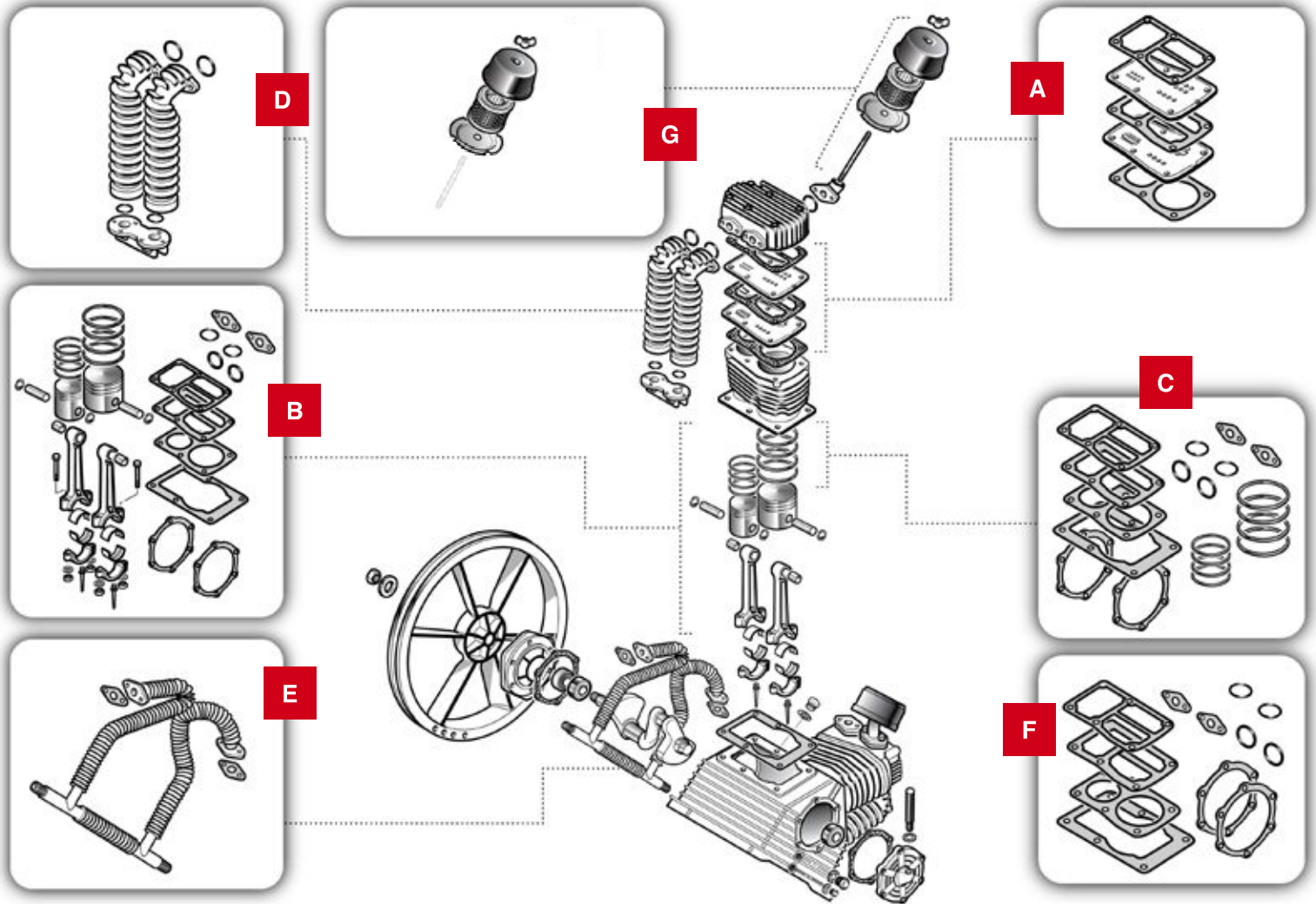


GRUPPI POMPANTI BISTADIO DOUBLE-STAGE PUMP UNITS

	GRUPPI POMPANTI BISTADIO DOUBLE-STAGE PUMP UNITS								
	KIT A	KIT B	KIT C	KIT D	KIT E	KIT F	G		OIL
	Piastra portavalvole completa <i>Complete valve plate</i>	Pistone-biella <i>Piston-conrod</i>	Segmenti <i>Piston rings</i>	Collettore intermedio <i>Intercooler</i>	Collettore finale <i>Final cooler</i>	Kit guarnizioni completo <i>Complete gasket kit</i>	Filtri aria <i>Air filters</i>		Q.tà max. olio (l) <i>Max. oil q.ty (l)</i>
						rotondo <i>round</i>	esagonale <i>hexagonal</i>		
K25	9434A12	9434B16	9434C15	9434D02	9434E08	9434F13	9421127	9421148	1,8
K28	9434A13	9434B17	9434C16	9434D02	9434E08	9434F14	—	9421148	1,45
K30	9434A14	9434B18	9434C17	9434D03	9434E07	9434F15	9421127	9421148	1,45
K50	9434A15	9434B19	9434C18	9434D04	9434E11	9434F16	9421128	9421149	1,75

Neues KIT verfügbar bestehend aus: Zylinderkopfdichtung, Ventilplattendichtung, Dichtung Zylinder/Ventilplatte und Ventilplattenplättchen
für K25 = 9434H05 für K28 = 9434H06 für K30 = 9434H07 für K50 = 9434H08

AEROTECH



GRUPPI POMPANTI BISTADIO CON CILINDRI A "V" DOUBLE-STAGE PUMP UNITS WITH "V" CYLINDERS

	KIT A		KIT B		KIT C	KIT D	KIT E	KIT F	G	OIL
	Piastra portavalvole completa*		Pistone-biella*		Segmenti	Collettore intermedio	Collettore finale	Kit guarnizioni completo	Filtri aria	Q.tà max. olio (l)
	Complete valve plate*		Piston-conrod*		Piston rings	Intercooler	Aftercooler	Complete gasket kit	Air filters	Max. oil q.ty (l)
	SX L	DX R	SX L	DX R					rotondo round	
K60	9434A16	9434A23	9434B20	9434B27	9434C19	9434D03	9434E12	9434F17	SP81000	3,1
K100	9434A17	9434A24	9434B21	9434B21	9434C20	9434D04	9434E18	9434F18	SP81000	6,67

Neues KIT verfügbar bestehend aus: Zylinderkopfdichtung, Ventilplattendichtung, Dichtung Zylinder/Ventilplatte und Ventilplattenplättchen
für K60 = 9434H07 für K100 = 9434H08